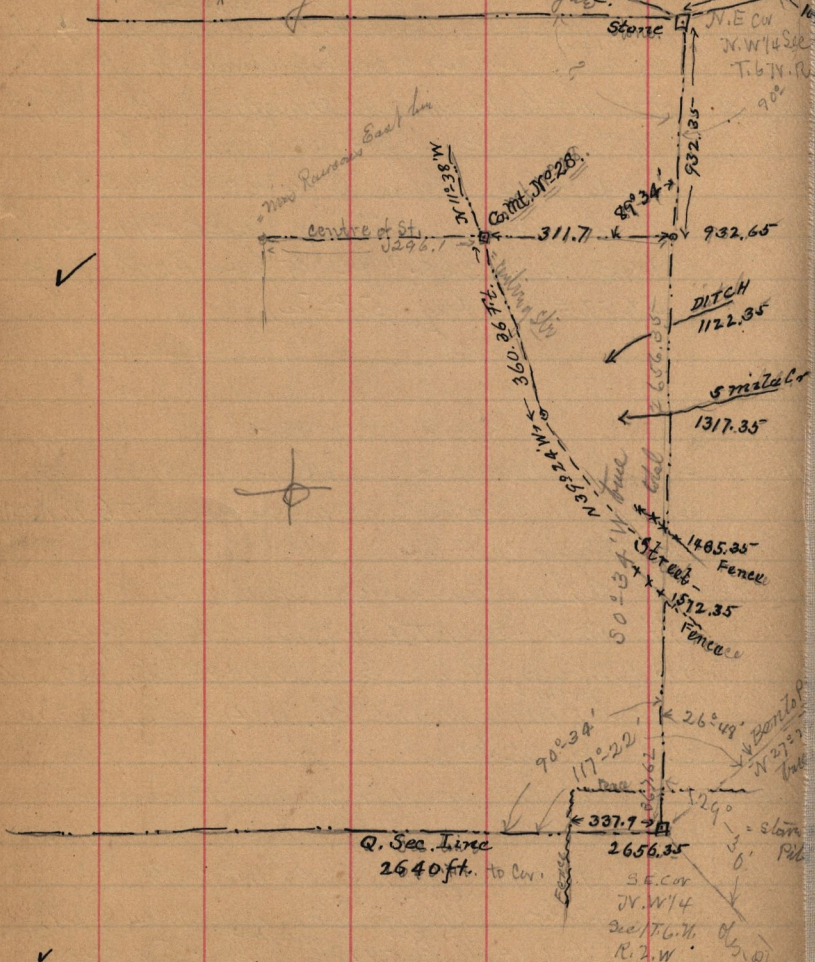


See page III
 4 B ask JE-157
 See Books #
 page 157

West 1.35 ch^{89.10E} - S 1° 30' E 2.13 ch^{140.53} - N. 3.00 ch^{1094.28E}
 S 3° 41' E 36.21 ch^{2389.80E} 1789' 14" W 16.53 ch^{1094.28E}
 14.58 ch^{967.29} to bog 47.09 ch



ties to Co. Mont J. R. 28 -
 J.V. 50 ft fence post in cor.
 N.W. 81.3 ft. Tel. pole
 S.E. 142.75 = 142.75 Locust tree